

Special Recommendations

Avoid any vehicle bodywork of insufficient strength, trim and items such as aerofoils or spoilers.

IMPORTANT! Carrier straps must always be re-tightened after cycles have been mounted to the carrier. Straps should be checked routinely for signs of wear and abrasion, and any worn straps must be replaced immediately.

After driving for a few miles STOP and check that all straps are secure and tight. If necessary, tighten the straps and tidy away any loose ends. This must be repeated at suitable intervals depending on the nature of the road.

Do not exceed 45kg maximum load (3 adult cycles) or 30kg maximum load (2 adult cycles) when the carrier is used on a booted saloon.

To ensure full compliance with the road traffic regulations, the use of lighting board/ number plate is required if your vehicle's existing lighting/number plates are obscured by the use of the carrier.

Drive with care, the handling characteristics of your vehicle will be affected when carrying cycles, (e.g. cornering, braking, side winds etc).

Retain these instructions for future reference, ensure that any other users of the cycle carrier are familiar with their contents.

The carrier may obstruct the rear window wiper of your vehicle. DO NOT operate the wiper with the carrier fitted.

When positioning cycles on the carrier ensure that they do not project beyond the profile of the vehicle and that no part of any cycle can touch the paintwork.

The use of rear mounted cycle carriers may be restricted in certain countries outside the UK. Always check with the relevant national tourist authorities prior to commencing your journey.

Use cloth or foam padding to prevent abrasion damage occurring between the frames of your cycles, or from contact between the cycles and the cycle carrier.

Care must be taken when positioning and loading the cycle carrier to avoid placing cycle tyres near the exhaust, and to ensure that a satisfactory ground clearance is maintained between the cycles and the road. Extra care should be taken when negotiating rough road surfaces, humps and ferry ramps.

All lengths are approximate.

MONT BLANC®

Mont Blanc Industri UK Limited

Eden Way, Pages Industrial Park, Leighton Buzzard,
Bedfordshire, LU7 4TZ England

Telephone: 01525 850800 Fax: 01525 850808
sales@montblancuk.co.uk www.montblancuk.co.uk

PI373-01

MONT BLANC®

CM03/CM03AN

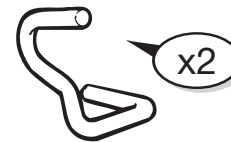
Lo Mount 3 Cycle Carrier Fitting Instructions

Please follow instructions carefully to ensure the safety of yourself and other road users. The initial assembly and fitting of this carrier will take approximately 15 minutes.

Before you begin:

- Make sure all parts are included in the package.
- Ensure that the vehicle boot lid/rear bumper are free from dirt and grim.

Kit Contents



x2

Chassis hook



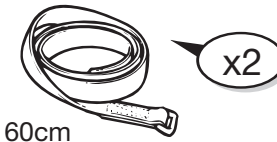
x2

Panel hook



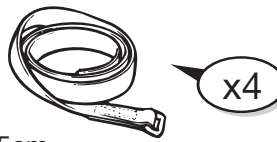
x2

Dumbbells



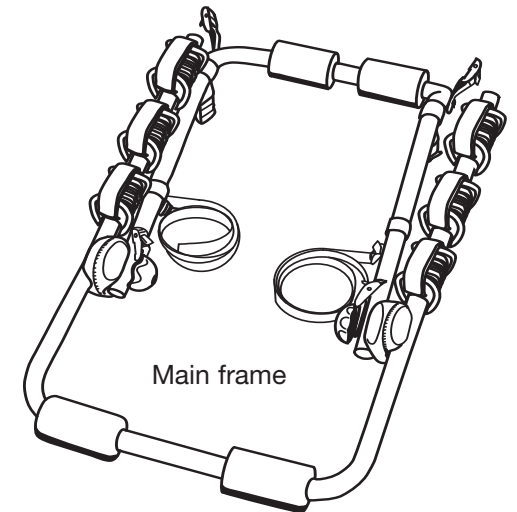
x2

160cm



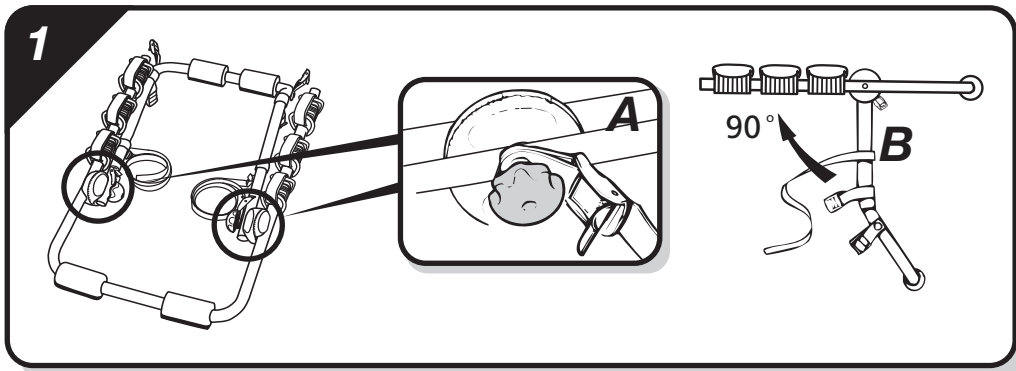
x4

95cm



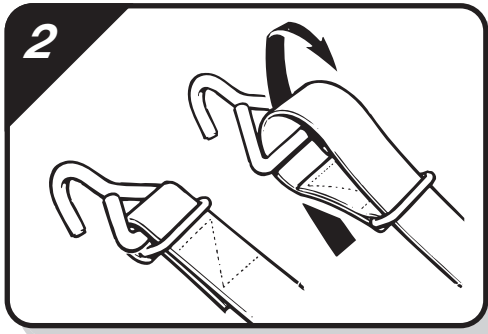
Main frame

Actual form and colour of product may differ slightly from that shown.

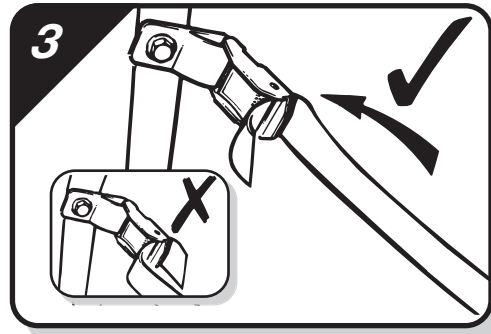


Position the assembled carrier on a clean surface as illustrated. Release the two ratchet adjusters by unscrewing the two hand wheels (A), rotate the cycle

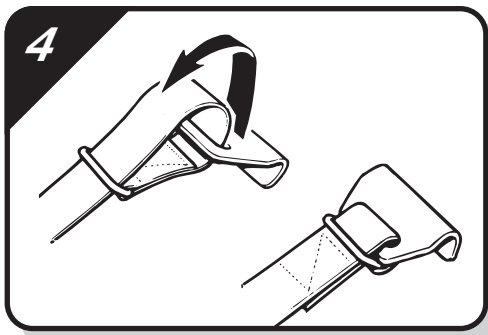
support arms through 90° (B) and lock in position by re-tightening the hand wheels.



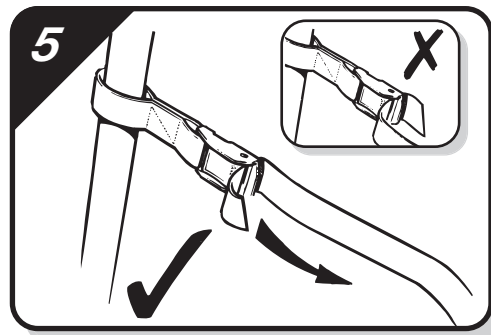
Lower strap assembly
Select 2 x 95cm straps and assemble the chassis hooks as illustrated.
Warning: Ensure that the straps are fully tightened on the chassis hooks.



Feed the strap through the lower set of cam buckles.
WARNING: ENSURE THAT THE STRAPS ARE INSERTED THROUGH THE CAMBUCKLES IN THE CORRECT DIRECTION.



Side strap assembly
Select 2 x 95cm straps and assemble panel hooks as illustrated.
Note: Ensure that the straps are fully tightened on the panel hooks.



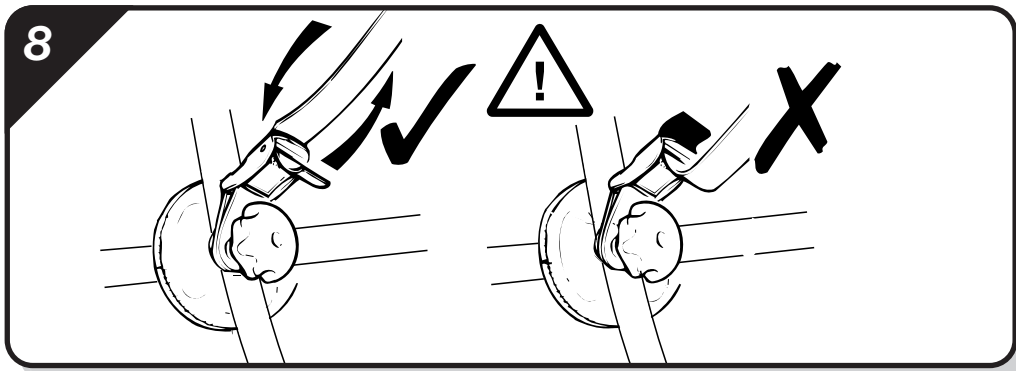
Feed the strap through the middle set of cam buckles.
WARNING: ENSURE THAT THE STRAPS ARE INSERTED THROUGH THE CAMBUCKLES IN THE CORRECT DIRECTION.

17

Number Plate kit included with the following carriers:
CM03 – No CM03AN – Yes 691225 – No

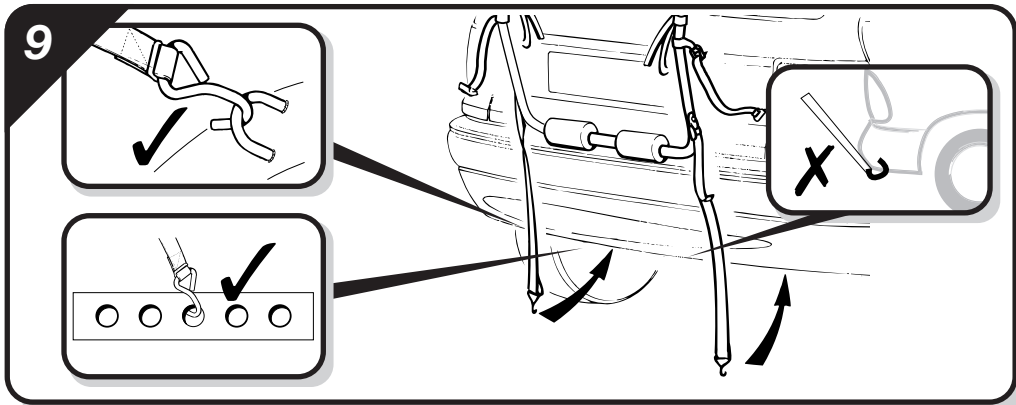
Contents

Assembly Instructions



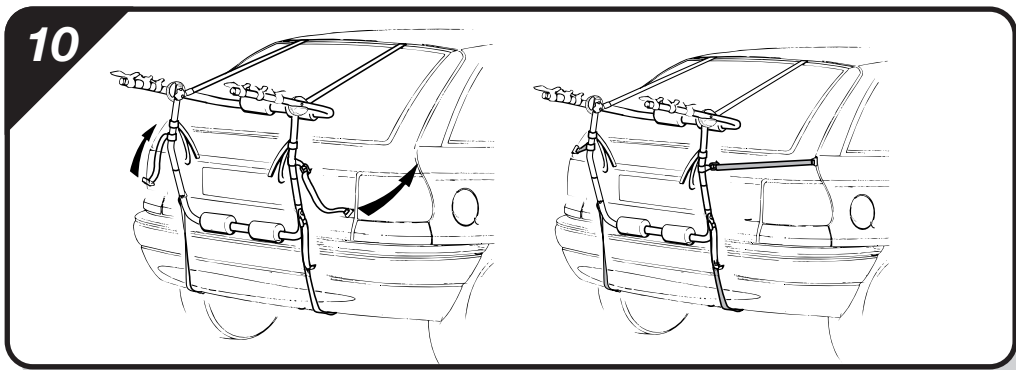
Connect the top straps to the carrier by threading through the top set of cam buckles. Pull the straps through until the cycle carrier is loosely supported in position.

WARNING: Ensure that the straps are inserted through the cam buckles in the correct direction.



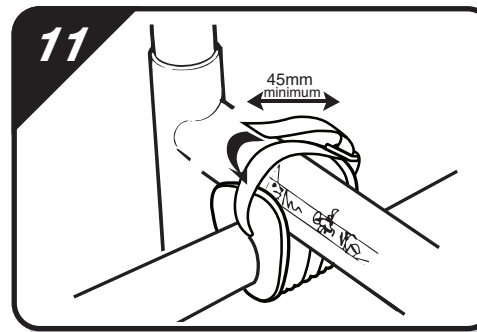
Position the lower strap chassis hooks to an appropriate location under the car for example; towing eye, steel chassis section or bumper support.

Note: It is vital that you use a strong metal location to secure these chassis hooks. Ensure the webbing straps do not touch the vehicle exhaust.



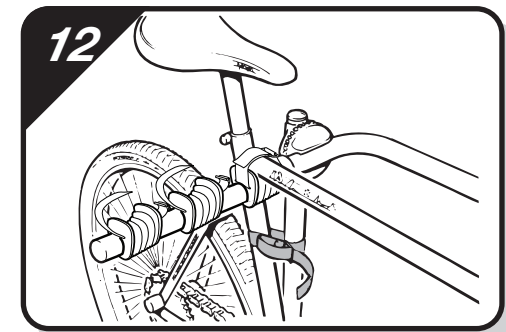
Position the side panel hooks on the edges of the tailgate/boot. Tighten all straps alternately. Check that the carrier sits firmly in position and there is a minimum

5cm (2 inches) clearance between main carrier frame and your vehicle. To increase the clearance you may have to adjust the angles of the support tubes.

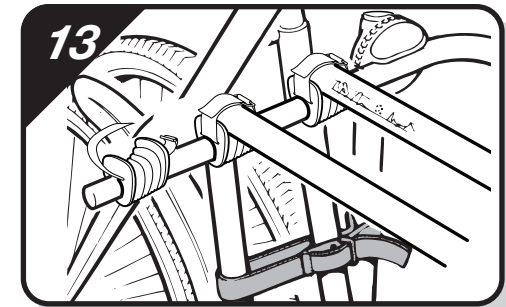


Position your cycle(s) into the saddle area of the frame locator. Pass the webbing strap over the frame of the cycle and thread through the metal loop. Pull the strap back tightly and press the hook and loop fastener to secure.

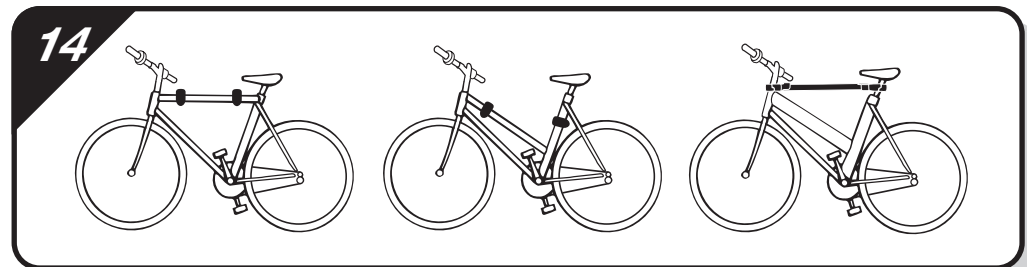
Note: there must be a minimum 45mm of overlap (See Diagram). The straps supplied with this product are suitable for cycle frames up to 40mm in diameter. For larger frames, longer straps are available as an accessory.



IMPORTANT: Using the fitted RED webbing straps, secure the first cycle to the carrier main frame. Failure to use these straps will result in the cycles falling off the carrier.



When carrying a second or third cycle, feed the RED straps around all cycles, and fully tighten. Failure to use these straps will result in the cycles falling off the carrier. To reduce obstruction from the handle bars alternate the direction of each cycle during loading.



The cycle frame locators can be adjusted to best suit the angle of ladies', full suspension and children's etc cycle frames. A False Crossbar is available as an accessory for the easy mounting of these differing frame styles.

IMPORTANT:

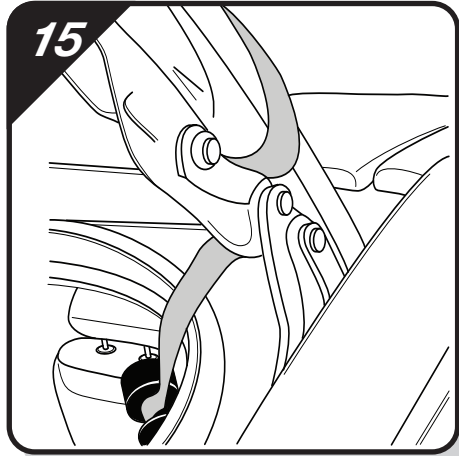
- Re-tighten all cycle carrier-webbing straps after loading the cycle(s).
- Do not open your boot/tailgate with the panel hooks in position.

Special Fitting Instructions

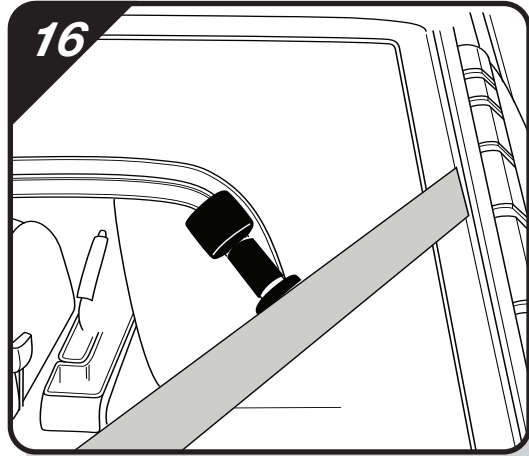
For use when fitting rear cycle carriers to the Renault Laguna 5dr. Hatch 1994-2001 model

Due to the rubber moulding running around the edge of the rear window, mounting of the top straps along the top edge of the rear window can cause deformation and eventually damage to the moulding.

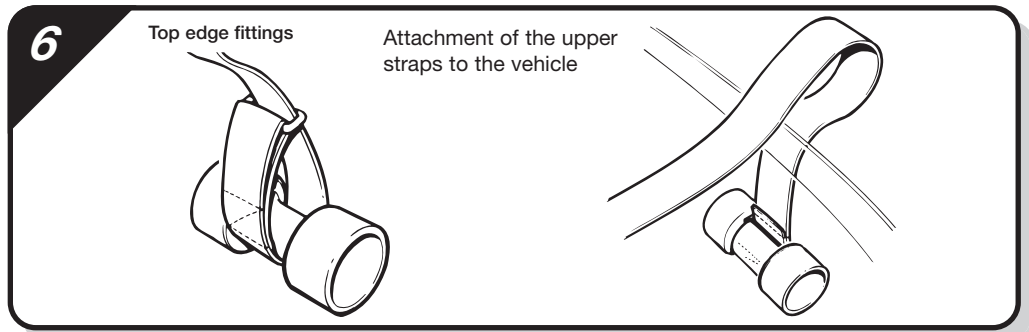
To eliminate this we advise mounting the carrier top straps as detailed in this special instruction.



Feed the top straps through the tailgate hinges as shown (one strap each side), leaving the dumbbells hanging freely inside (Fig 15). Carefully close hatch and then pull free ends of straps trapping dumbbells against the interior trim. (Fig 16). Attach both straps to cycle carrier and refer to the cycle carrier instructions for all remaining fitting instructions.

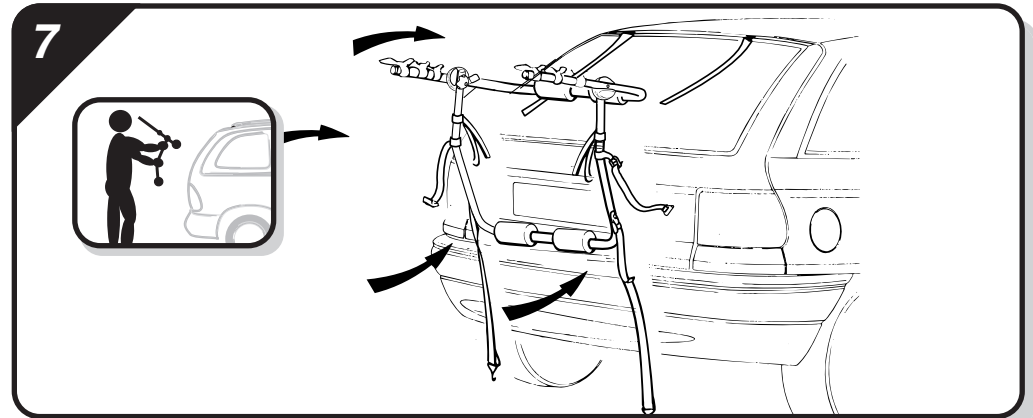


Note: The manufacturer operates a policy of continuous development, and reserves the right to alter specifications without notice. In the event of fitting difficulties, telephone our helpline on 01525 850800.



Top edge fittings Select 2 x 160cm straps and assemble dumbbells as illustrated. Open the tailgate, and from inside your vehicle thread the straps over the top edge leaving the dumbbells hanging free. Carefully close the tailgate then gently pull the straps until the dumbbells sit firmly against the interior trim.

NOTE: Panel hooks, as shown in step 4, should not be fitted to a glass edge. In the absence of any glass edges to the vehicle tailgate, always use the dumbbells to the top and panel hooks to the side. If your vehicle has glass edges to the side and a metal top edge the dumbbells must be fitted to the glass edge position. If your vehicle has both glass edges to the top and to the sides then dumbbells should be fitted in all positions replacing the panel hooks. Dumbbells (Also known as Glass Edge Fittings) are available separately as an accessory.



Offer the carrier to the vehicle with the lower tube resting on the upper area of the bumper. If necessary adjust the upper arm to sit against the tailgate of your vehicle or the upper surface of the boot lid. The carrier main frame should be leaning towards your vehicle with reasonable clearance, typically approx. 8cm (3 inches).

This will reduce as the straps are tightened. Ensure the cycle support arms point slightly upwards. Fully tighten all hand wheels.